

Corona da principessa



FASCIA DI BASE

Piegare e incollare le estremità.

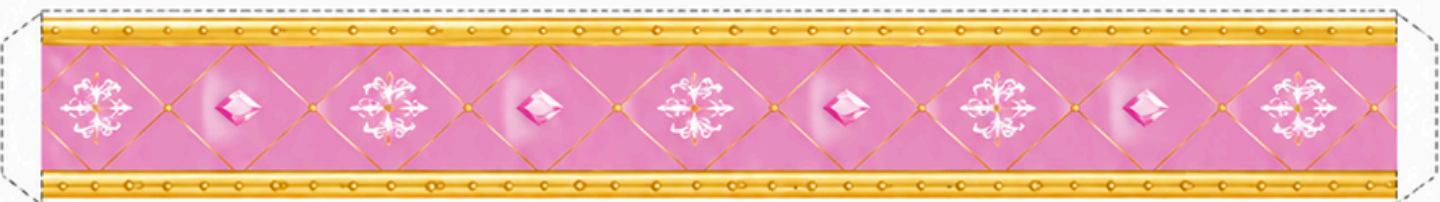
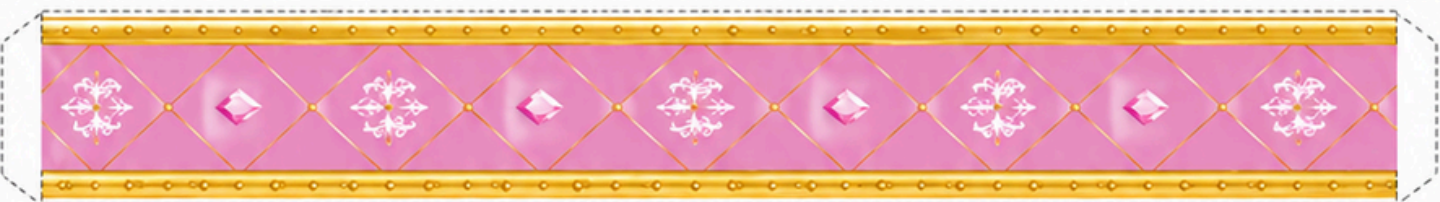
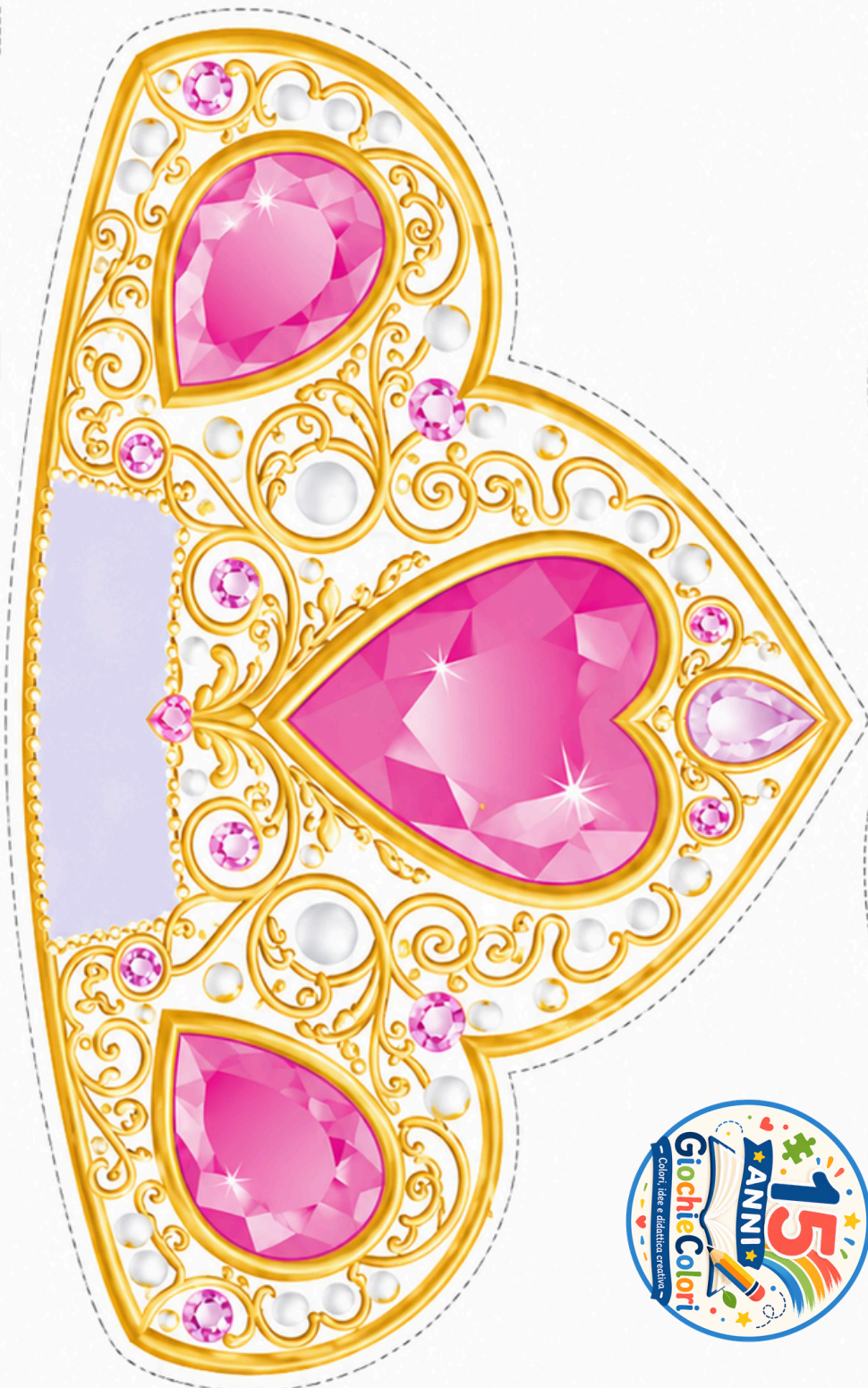


VISTA INDOSSATA

La fascia si adatta alla testa.



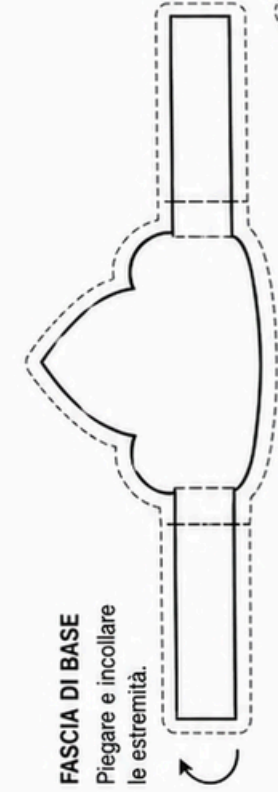
— RITAGLIA — PIEGA — INCOLLA



Corona da principessa

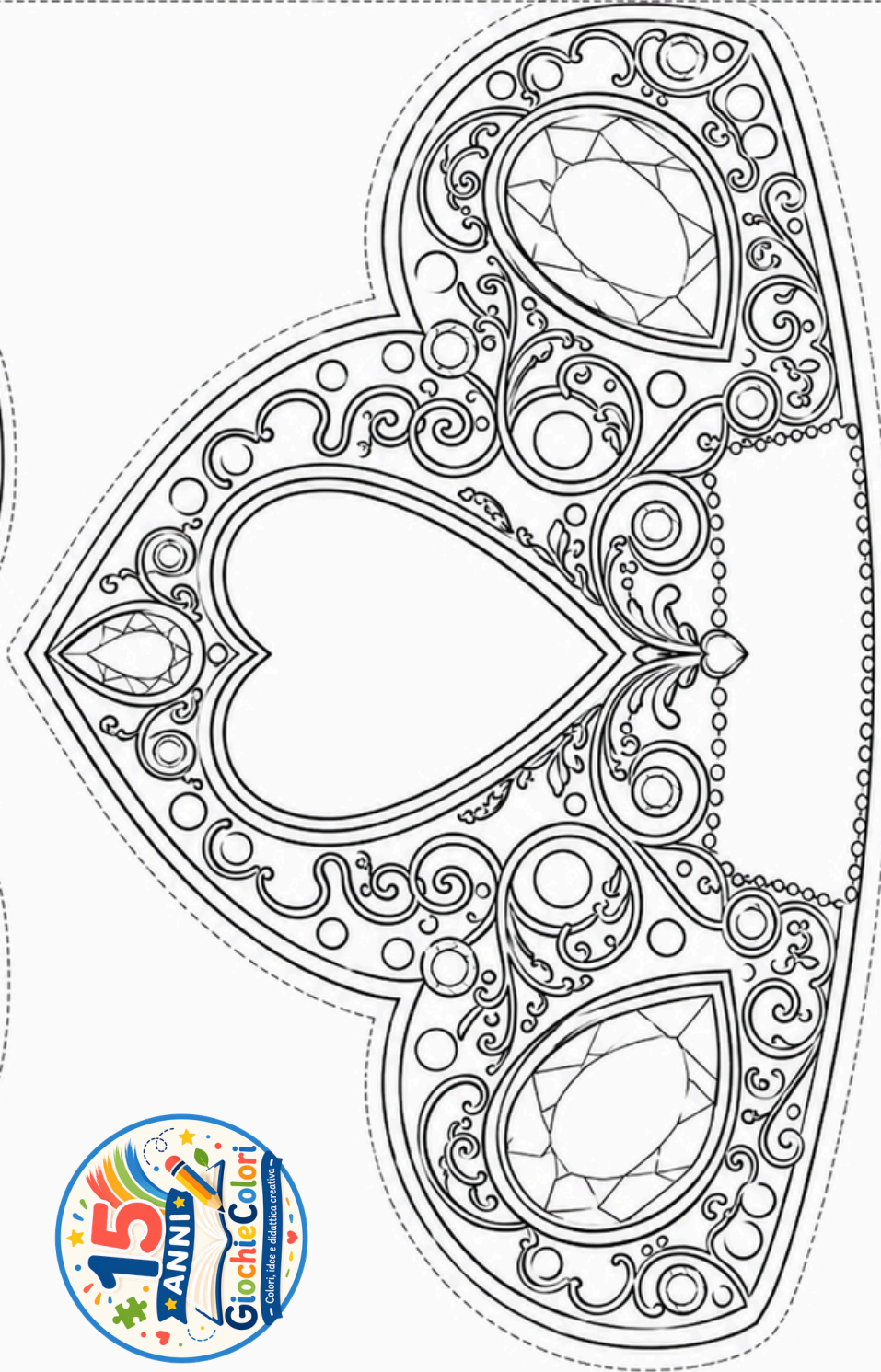
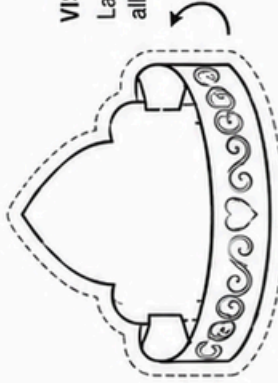
FASCIA DI BASE

Piegare e incollare le estremità.



VISTA INDOSSATA

La fascia si adatta alla testa.



--- RITAGLIA --- PIEGA --- INCOLLA