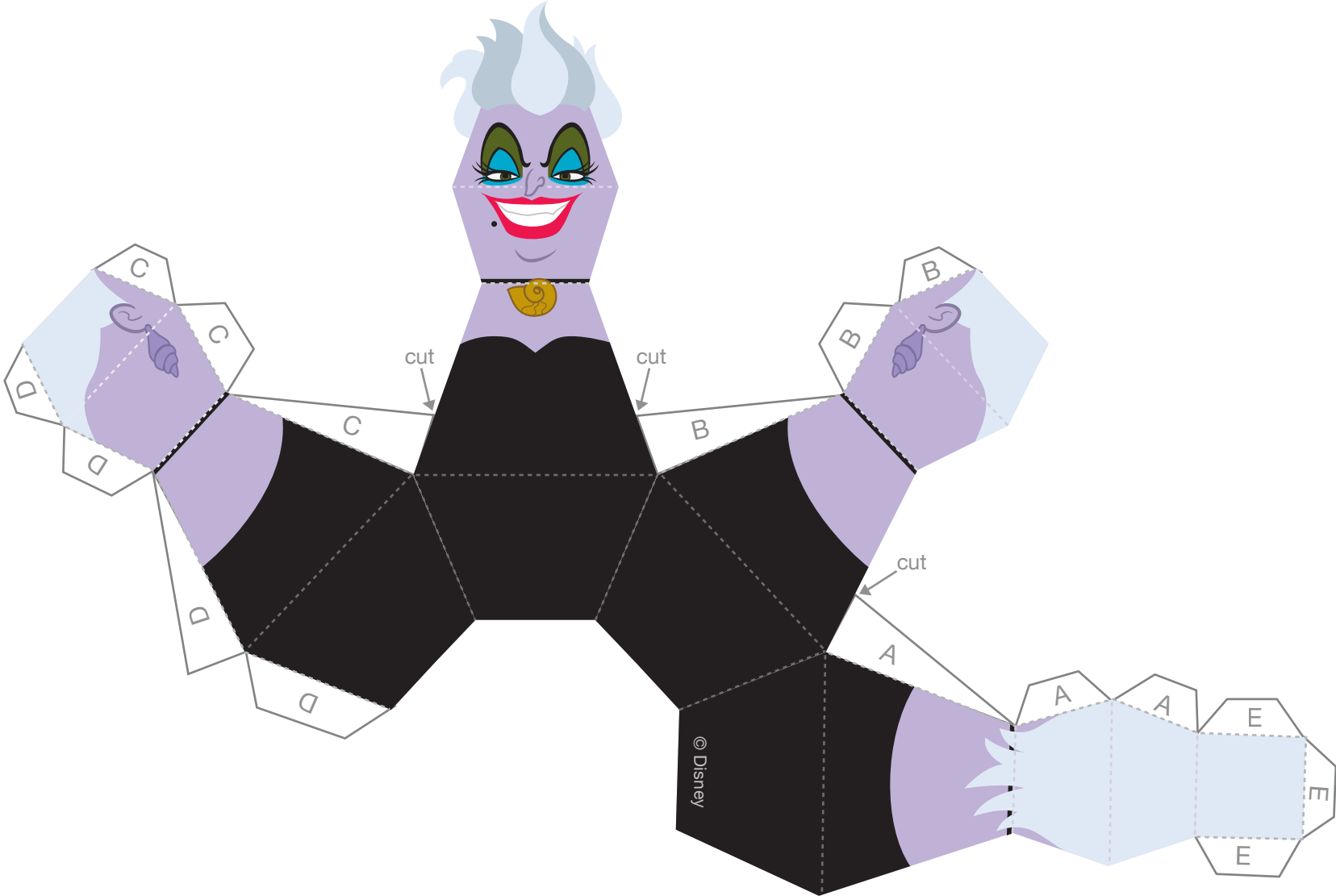


Disney Villains Bowling Pins

Ursula



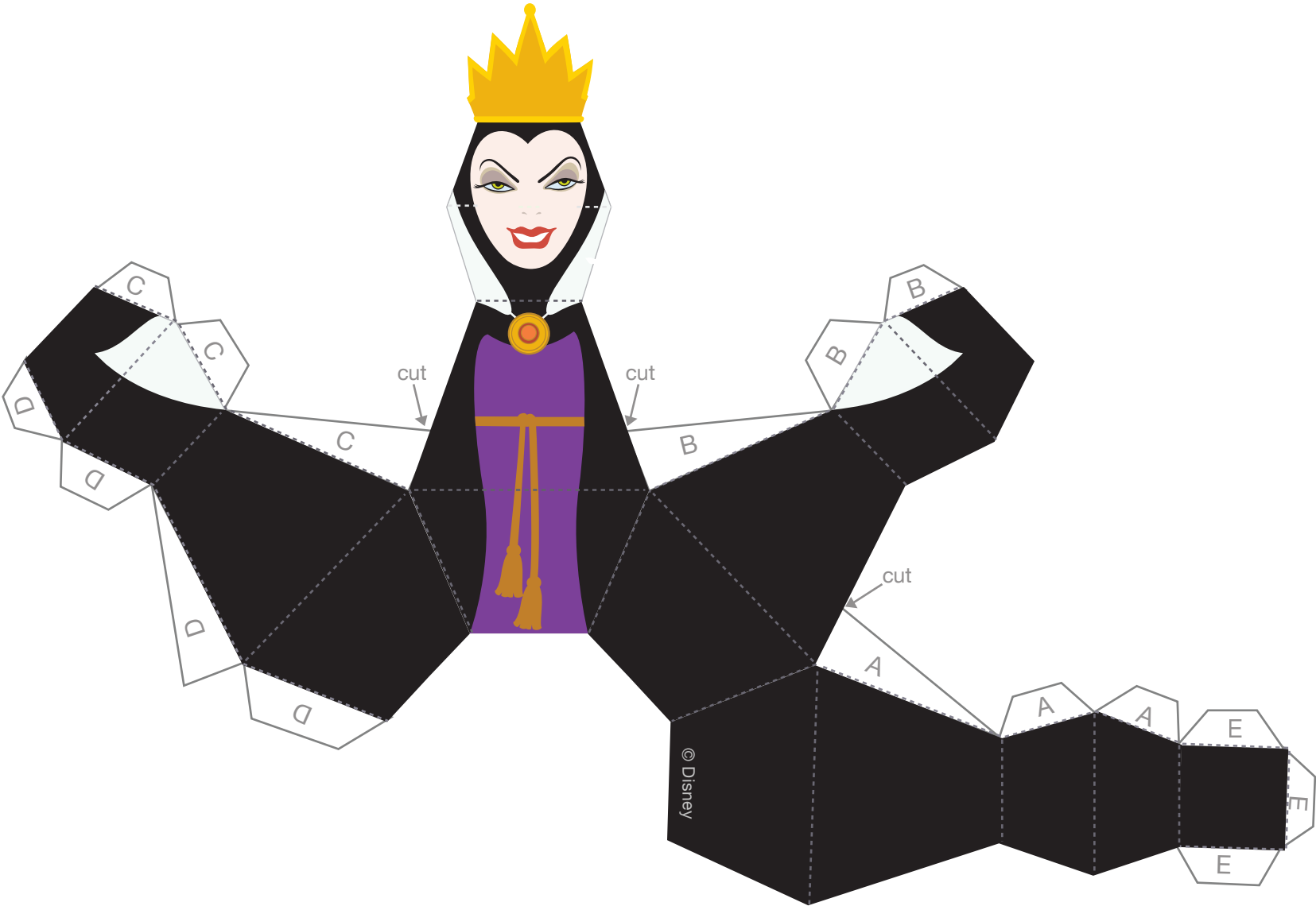
Disney Villains Bowling Pins

Maleficent



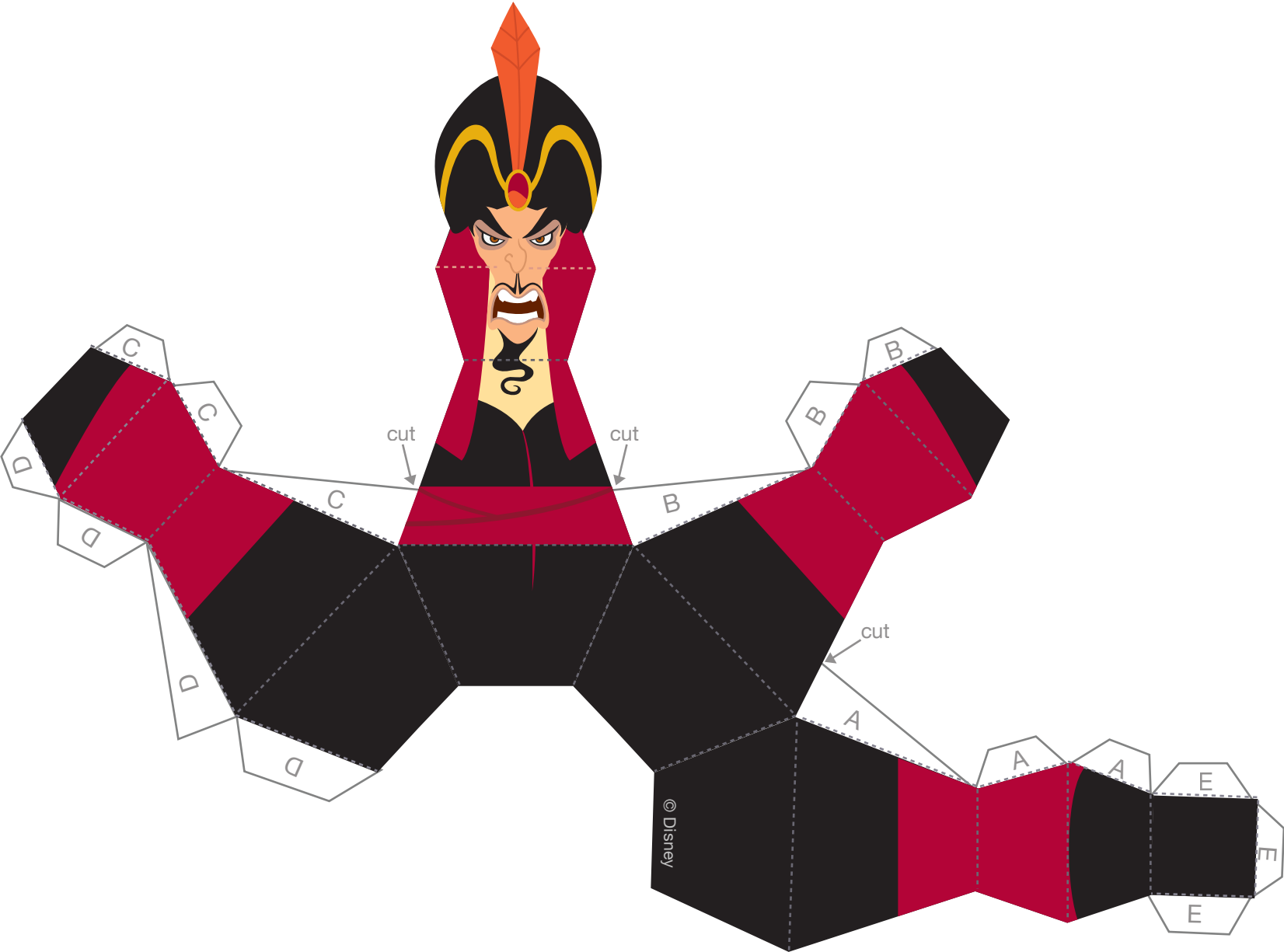
Disney Villains Bowling Pins

Evil Queen



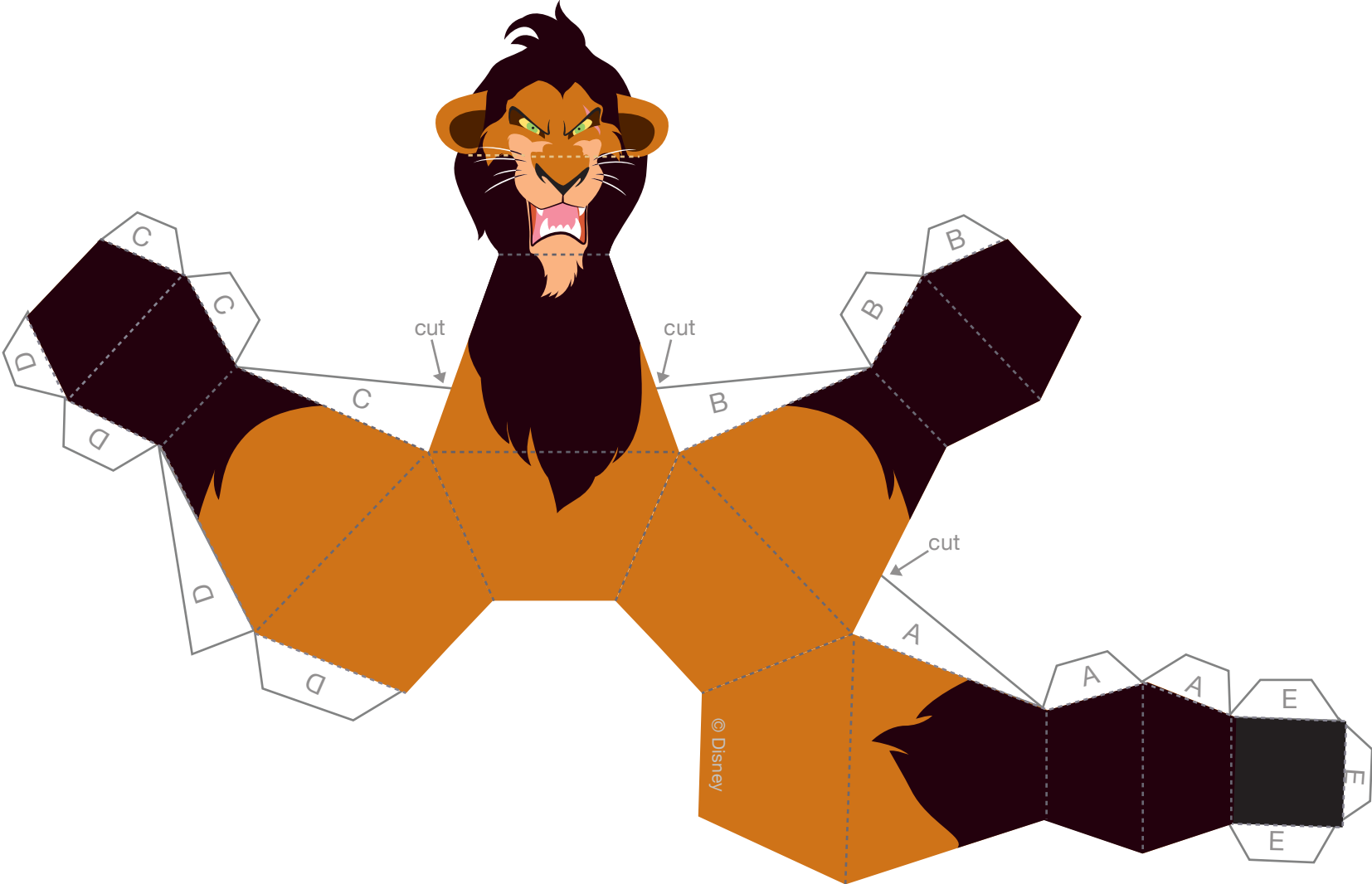
Disney Villains Bowling Pins

Jafar



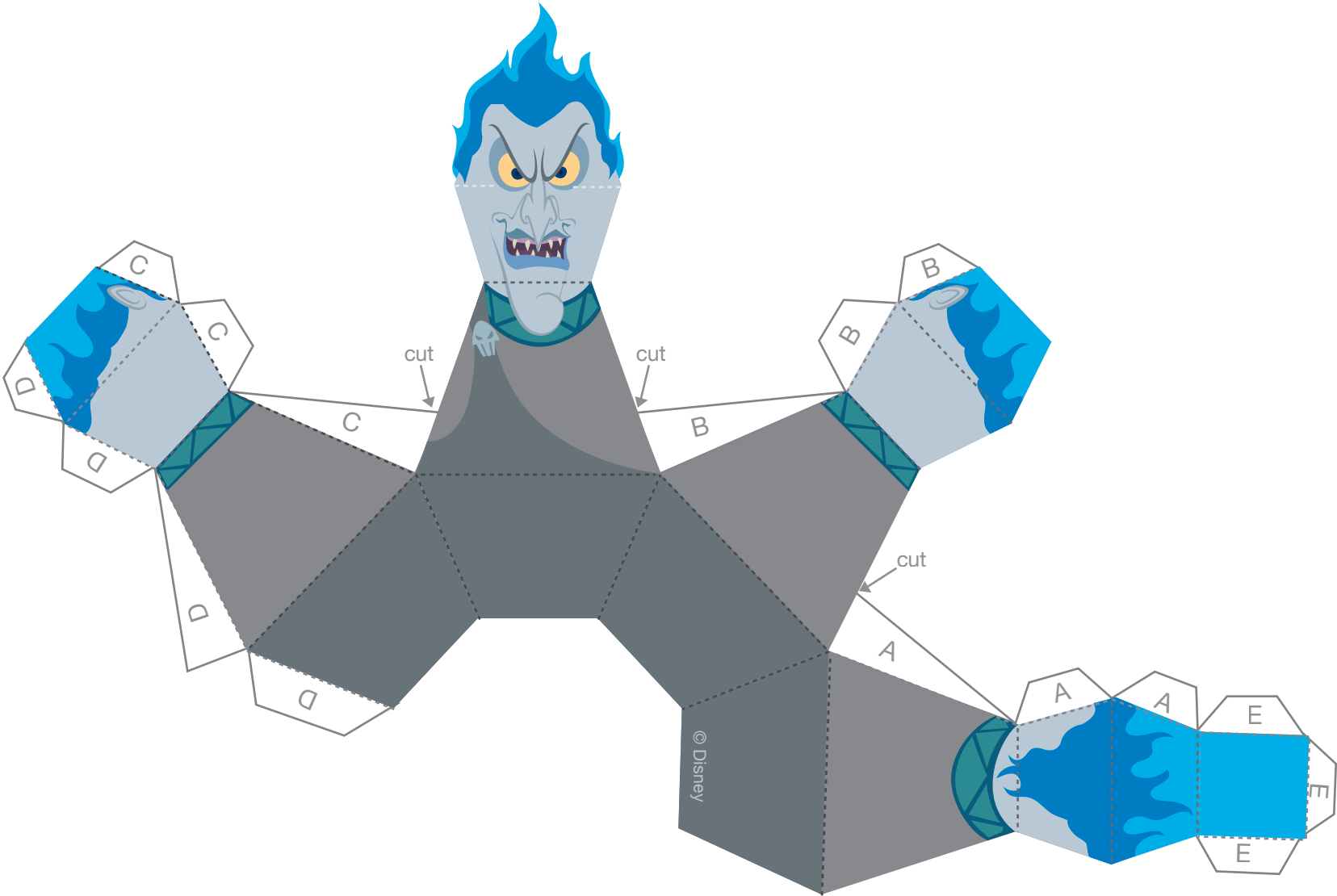
Disney Villains Bowling Pins

Scar



Disney Villains Bowling Pins

Hades



Disney Villains Bowling Pins

Instructions

1. Print out the pins on regular paper or cardstock and cut them out.
2. Starting with Ursula, make slits on tabs A, B, and C where indicated to separate the tab from the pin. Make four folds along the dashed lines at the base of Ursula's neck toward you. Make all other folds along the dashed lines away from you.
3. Glue all the A, B, C, and D tabs to the inside of the pin to create the pin's body shape. Glue the E tabs to the inside of the pin's top to close it like a lid. Repeat this step for all the other pins.
4. Set them up and knock 'em down with a small rubber ball!

